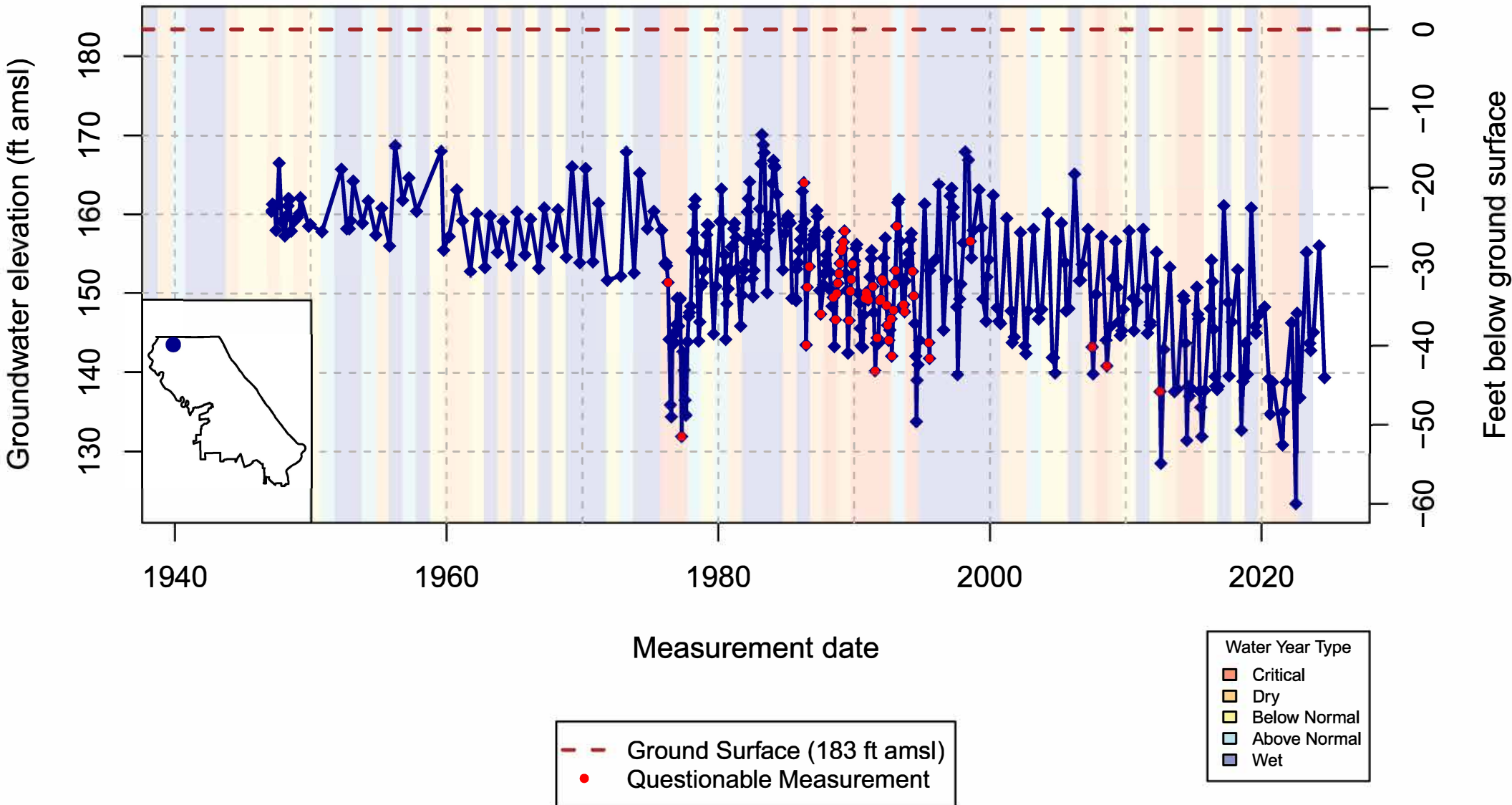
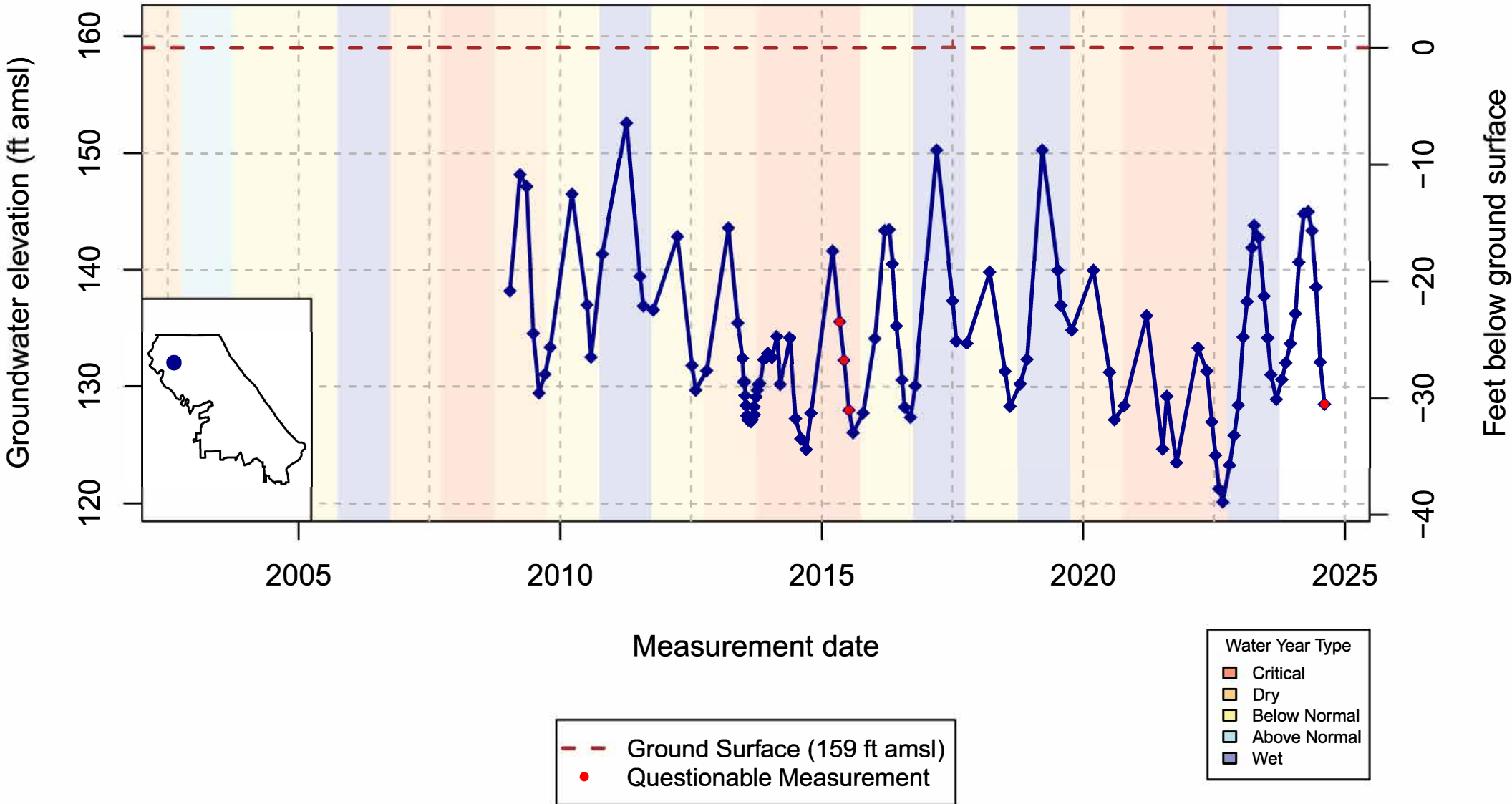


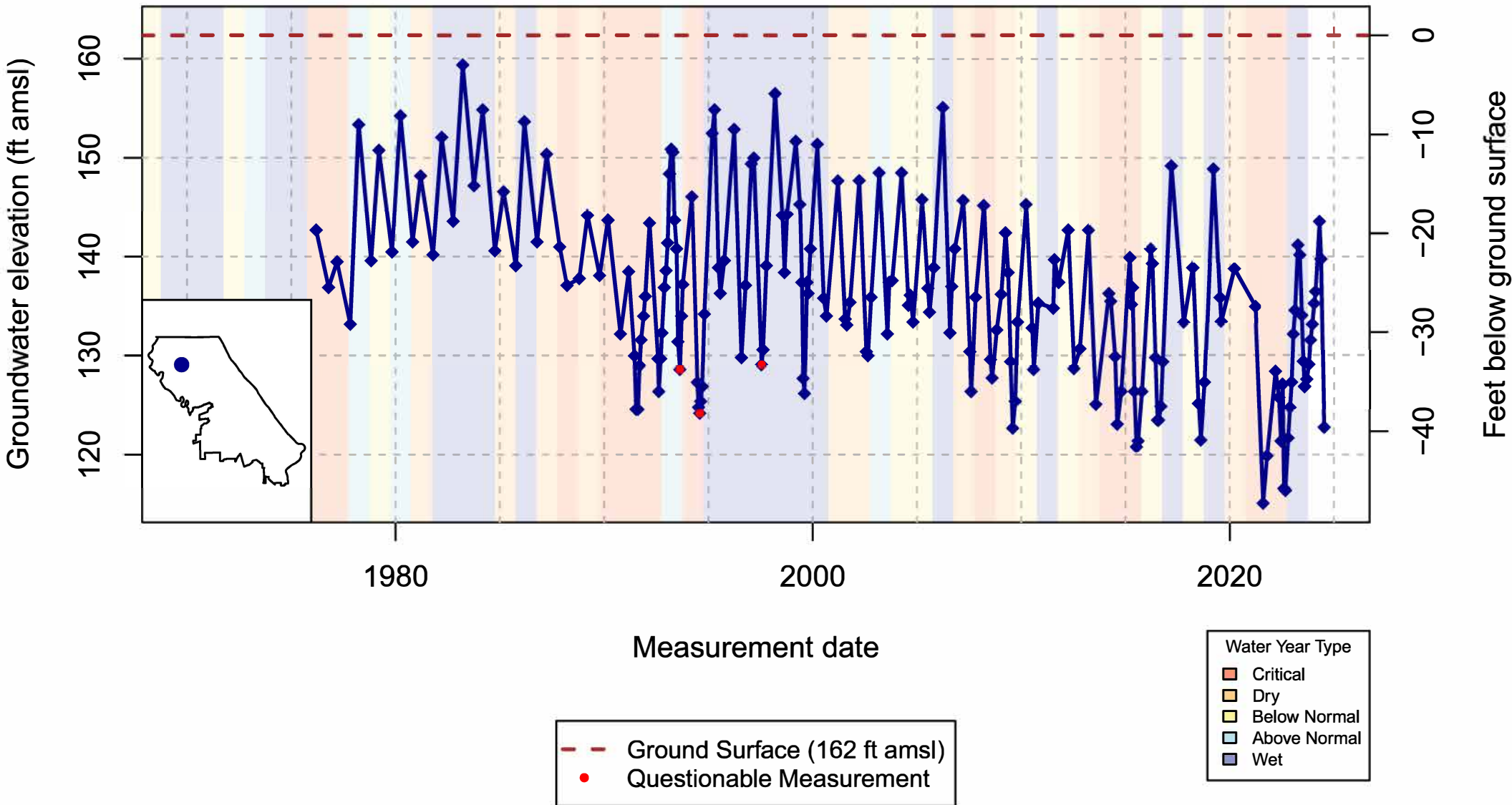
# Vina Subbasin – State Well Number (SWN): 23N01W09E001M(1) – Upper Aquifer



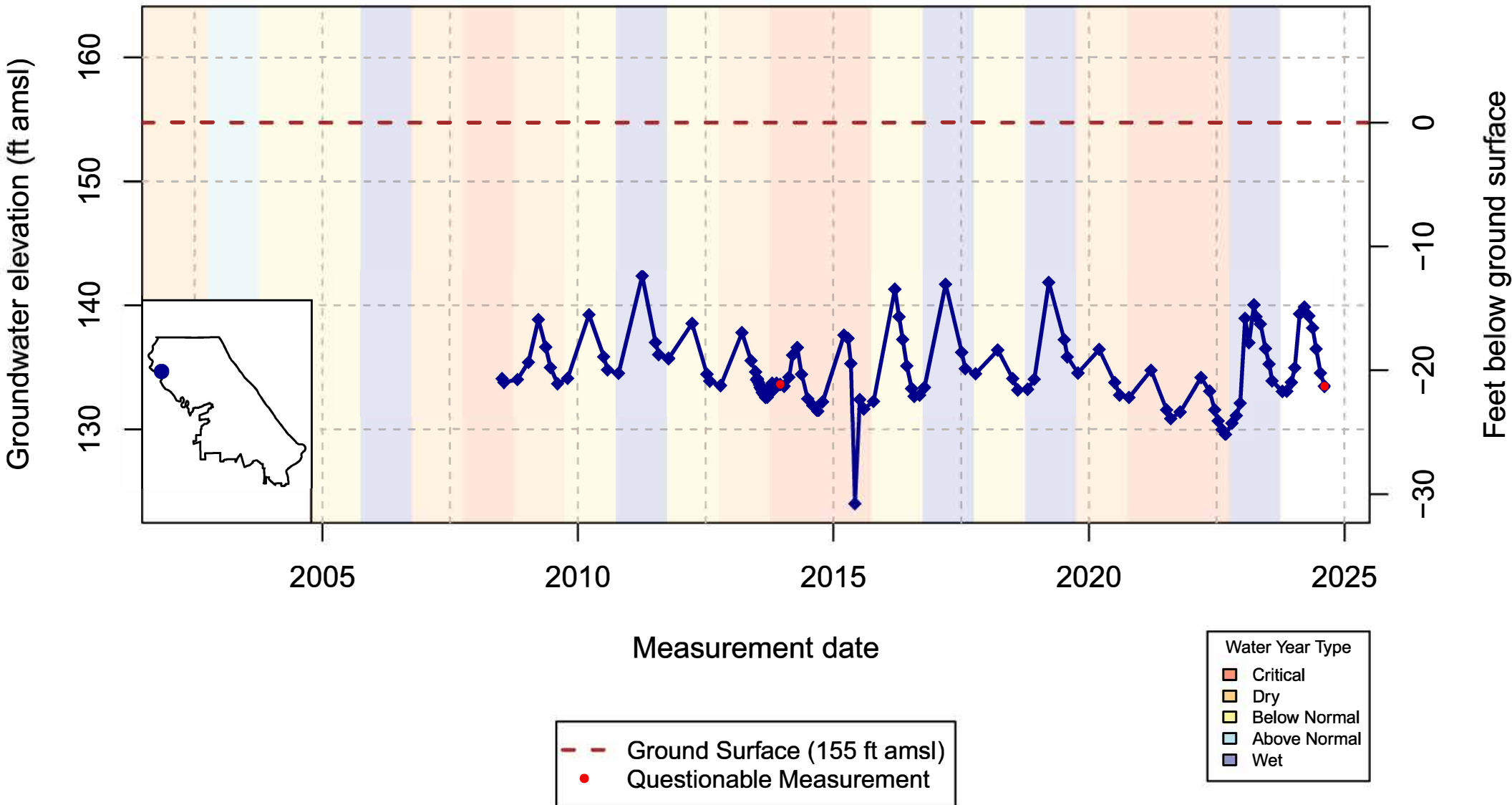
# Vina Subbasin – State Well Number (SWN): 23N01W28M005M(2) – Upper Aquifer



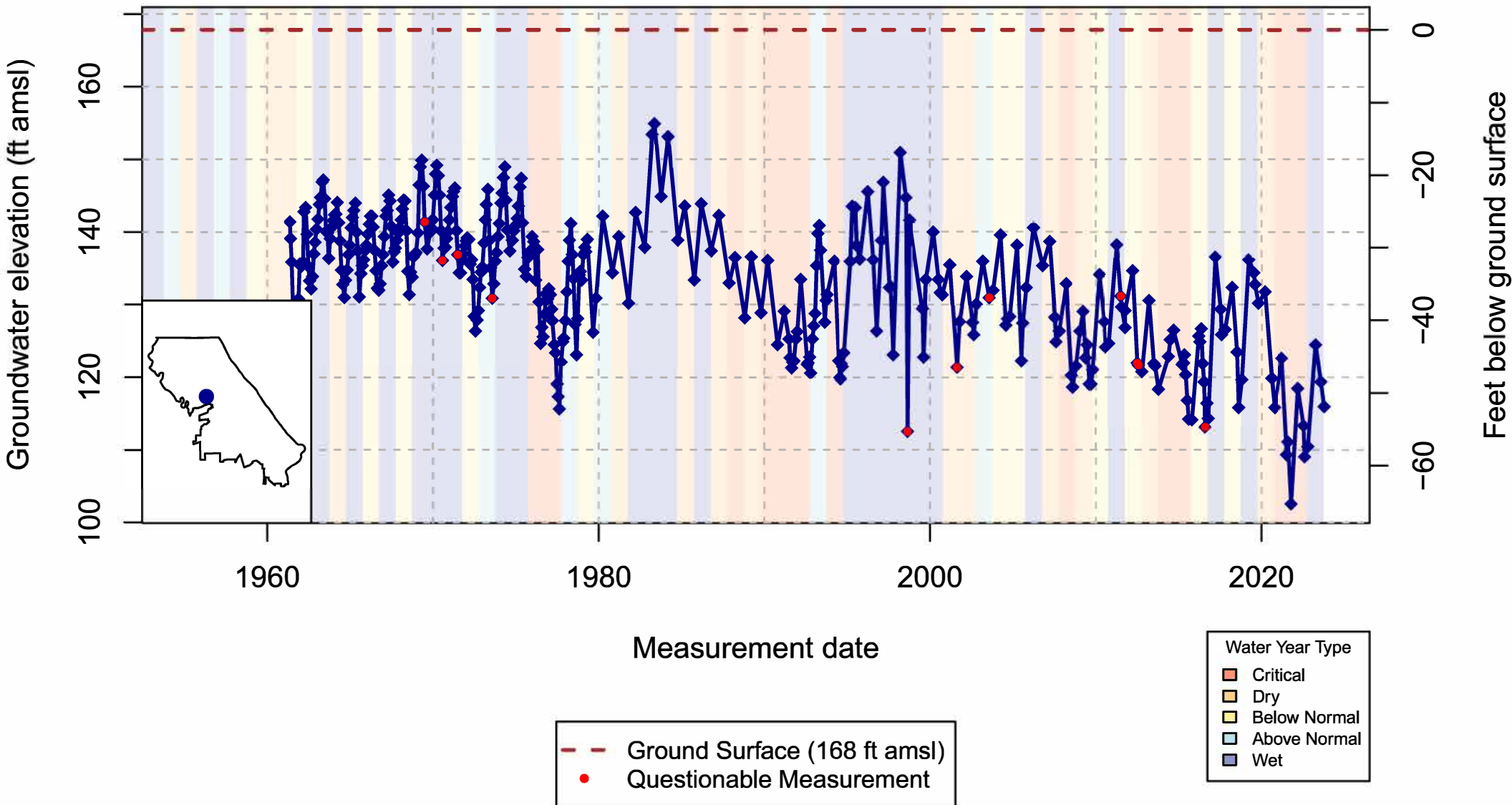
# Vina Subbasin – State Well Number (SWN): 23N01W27L001M(3) – Upper Aquifer



### Vina Subbasin – State Well Number (SWN): 23N01W31M004M(4) – Upper Aquifer

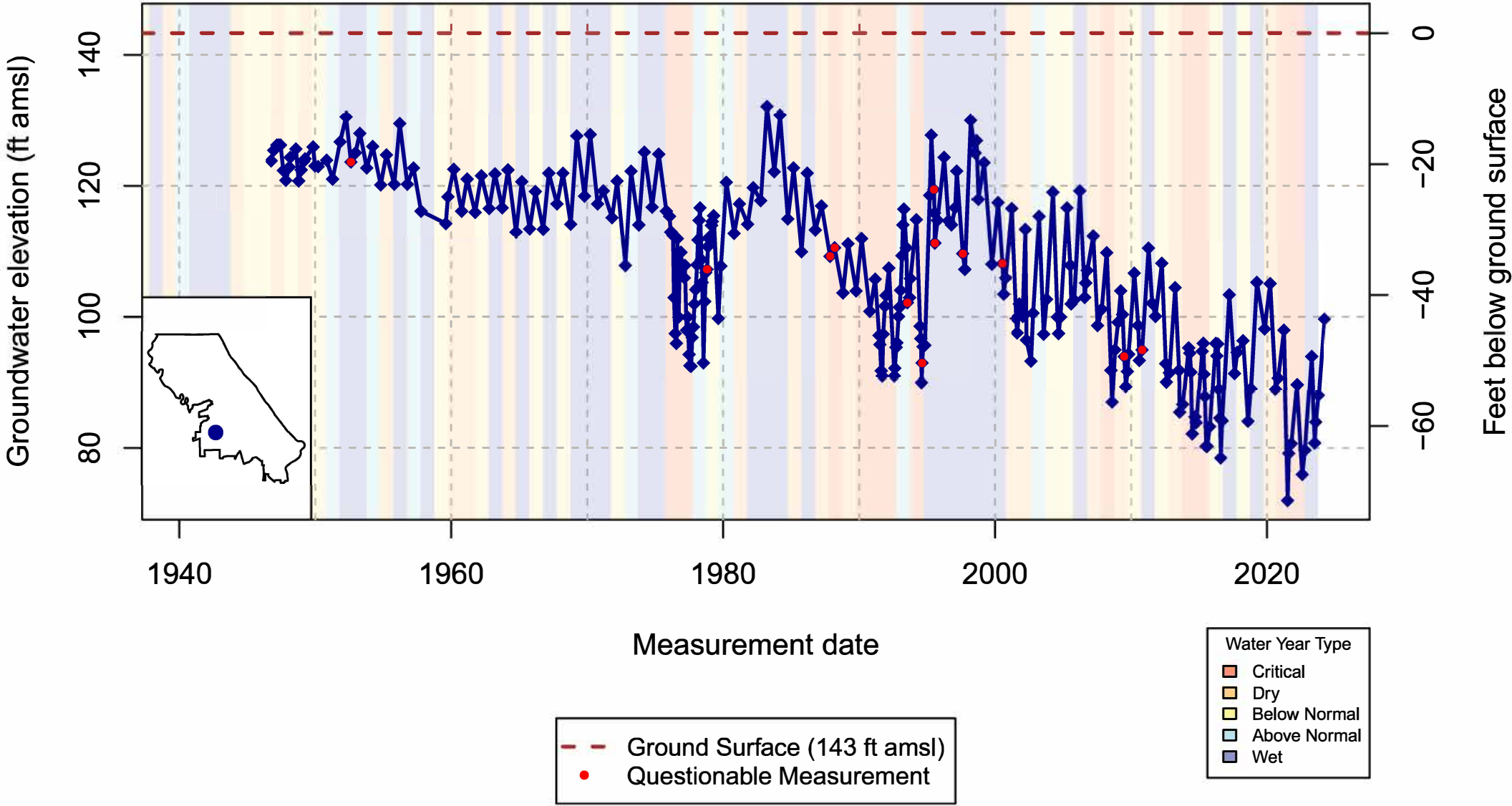


# Vina Subbasin – State Well Number (SWN): 22N01E20K001M(5) – Upper Aquifer

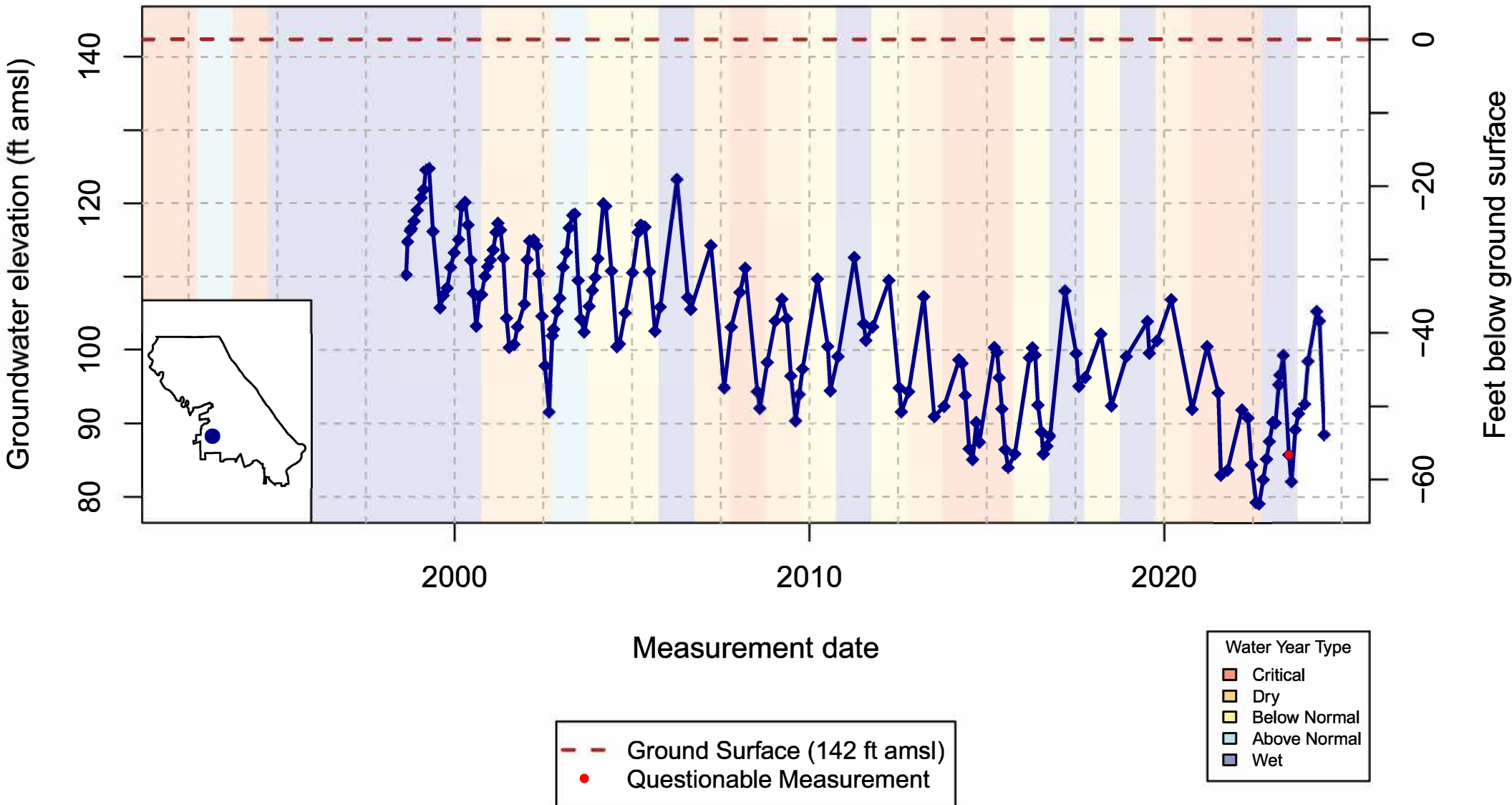




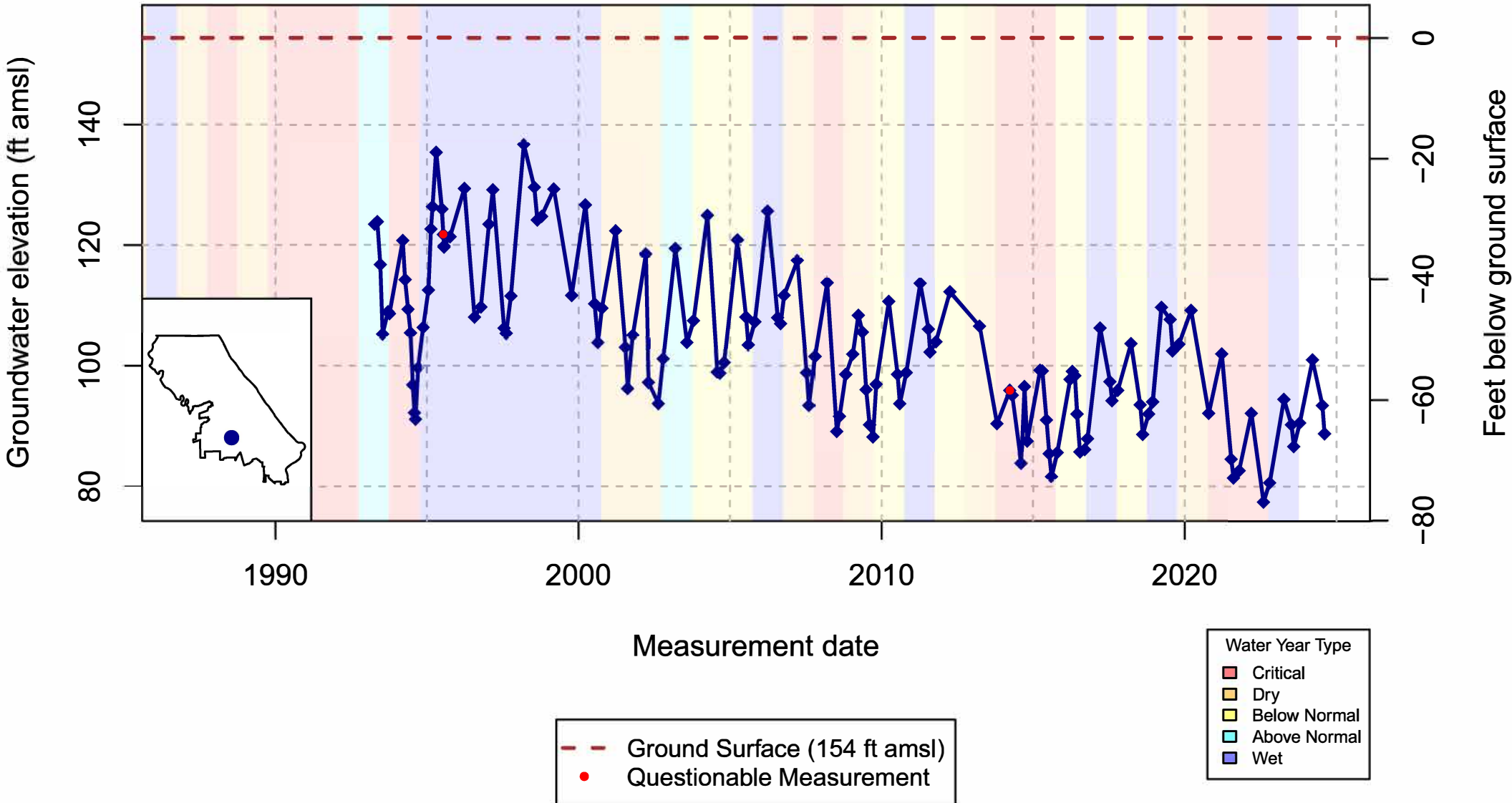
### Vina Subbasin – State Well Number (SWN): 21N01E27D001M(6) – Upper Aquifer



# Vina Subbasin – State Well Number (SWN): 21N01E28F001M(7) – Upper Aquifer

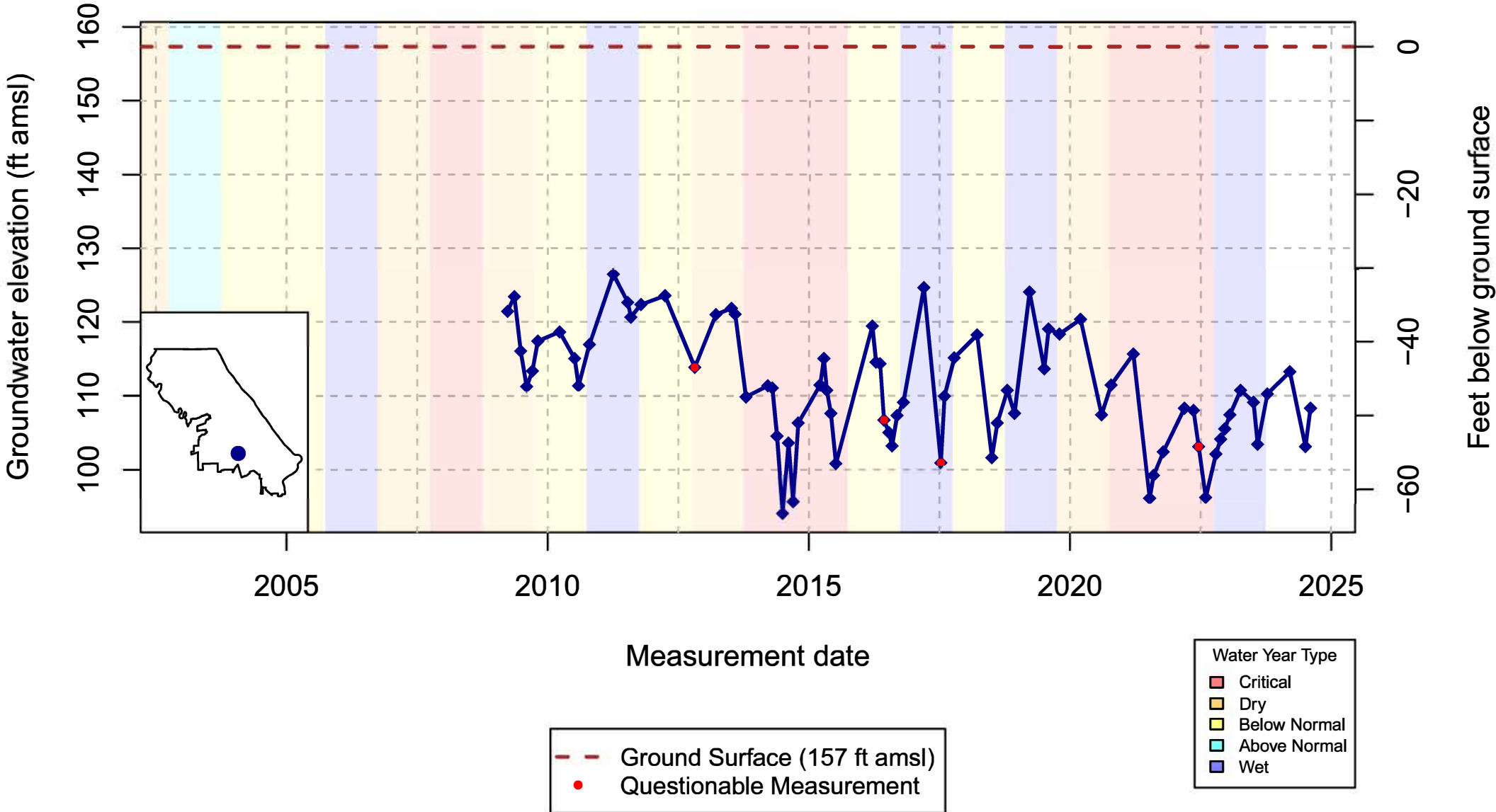


# Vina Subbasin – State Well Number (SWN): 21N01E25K001M(8) – Upper Aquifer

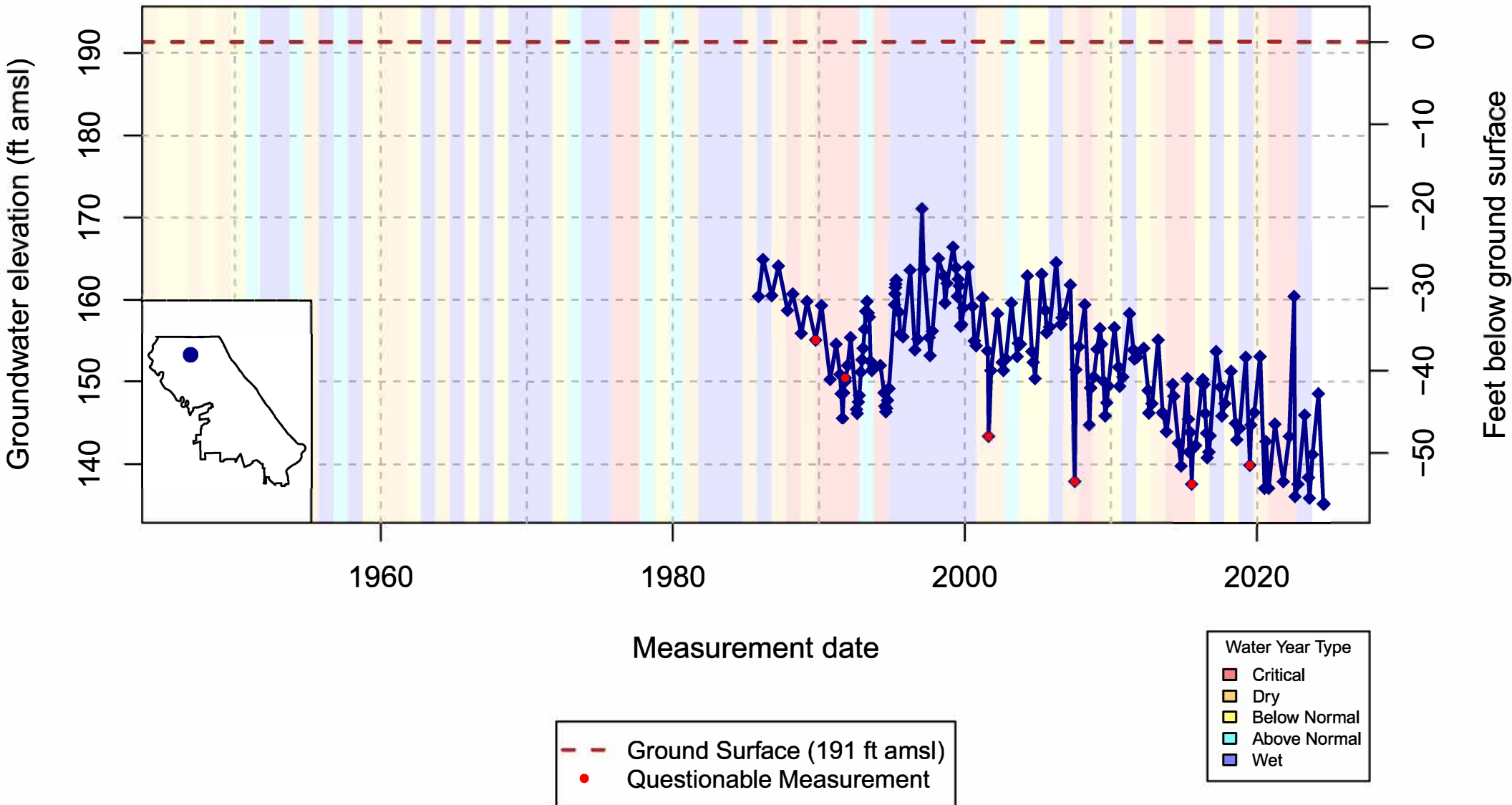




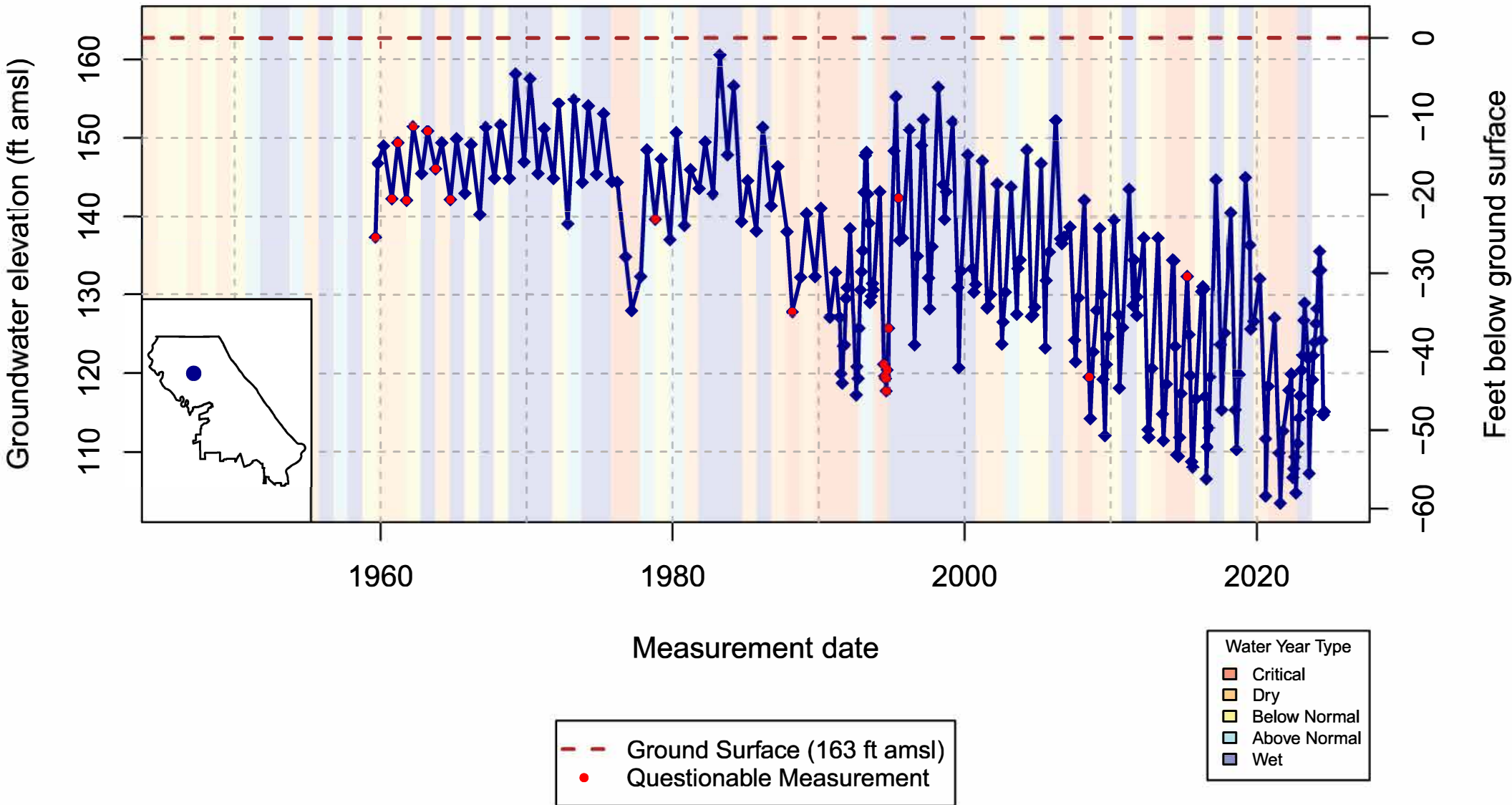
# Vina Subbasin – State Well Number (SWN): 21N02E32E001M(9) – Upper Aquifer



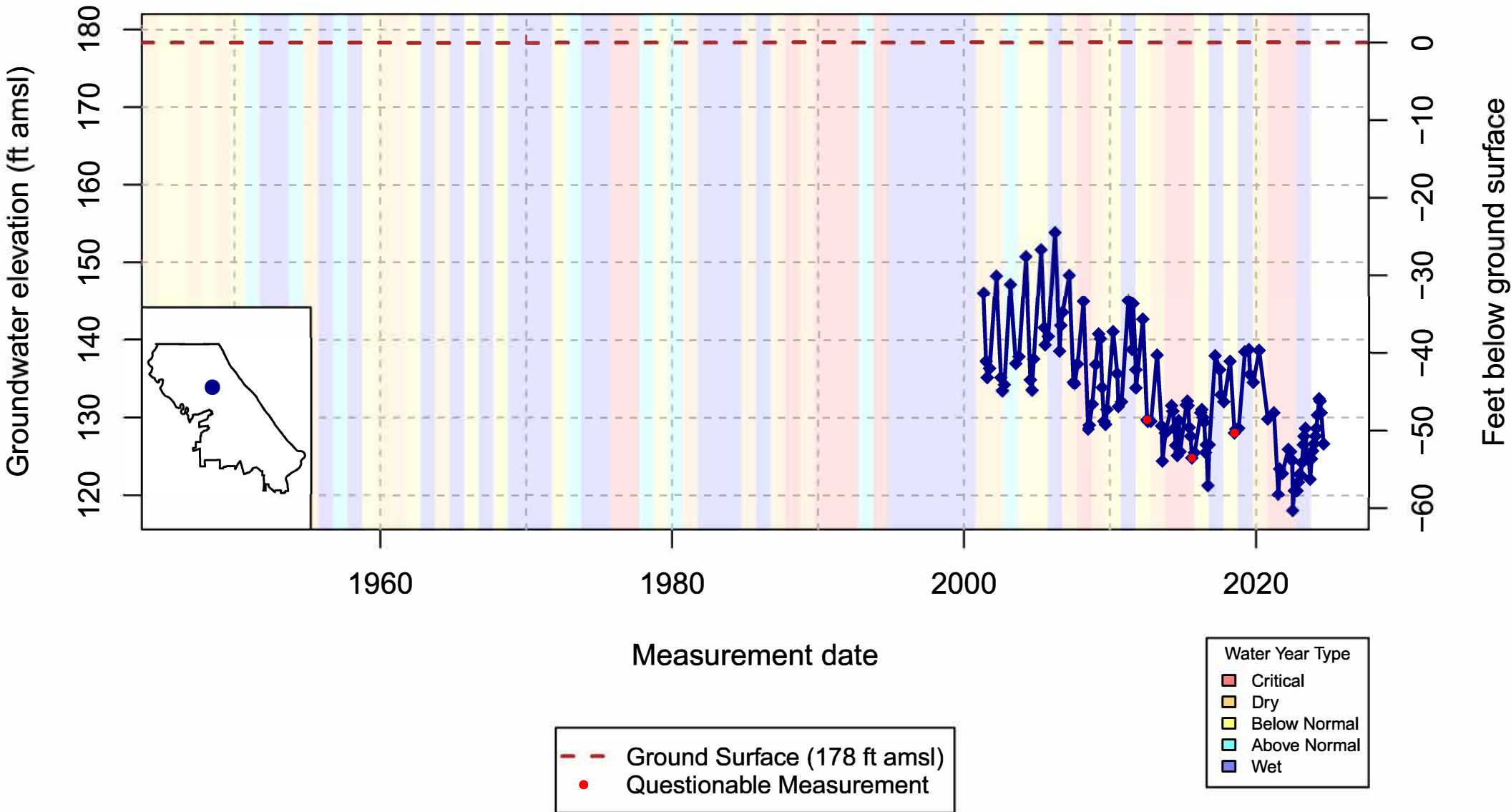
# Vina Subbasin – State Well Number (SWN): 23N01W14R002M(10) – Upper Aquifer



# Vina Subbasin – State Well Number (SWN): 23N01W36P001M(11) – Upper Aquifer



# Vina Subbasin – State Well Number (SWN): 22N01E09B001M(12) – Upper Aquifer



# Vina Subbasin – State Well Number (SWN): 22N02E30C002M(13) – Upper Aquifer

